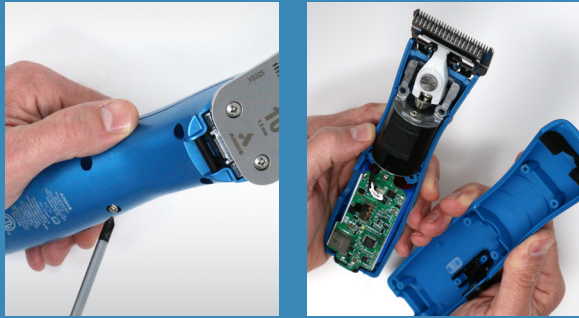




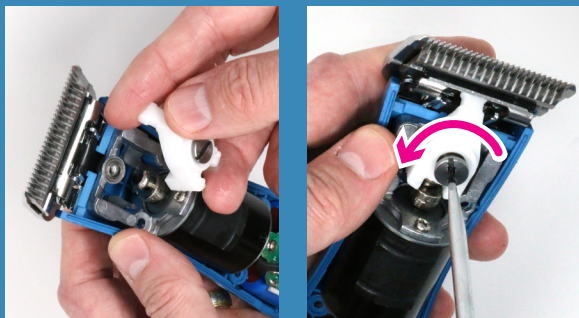
EMERGE® LITE BLADE DRIVE REPLACEMENT



STEP 1. Separate lower housing from upper housing on the clipper. You will need a phillips screwdriver to remove the 6 screws. It is not necessary to remove the blade or hinge to reach the blade drive in the EMERGE® Lite.



STEP 2. Loosen the blade drive by using a larger flat head screwdriver to remove the main screw. Please insure to turn **CLOCKWISE** or **RIGHT** to loosen the screw. This is not the traditional way of "right is tight, left is loose"



STEP 3. Replace the blade drive, turn the screw to the **LEFT** to tighten. Make sure the new blade drive is positioned correctly above so that it moves the blade properly.



STEP 4. Lastly, replace the 6 screws to secure the upper and lower housing. Turn on clipper and check for proper sound, fit and function.

