

FLUID™

ANDIS HAIR TECH PUBLICATION



vol.

T

03

FLUID™

ANDIS HAIR TECH PUBLICATION

volume three

PRESENTING

MIXING HAIR TRENDS AND FASHION— AN ECLECTIC COLLECTION

Kevin Luchmun Artistic Director & Editorial Photographer

George Malsbury Co-Director

Kern Sorzano D.O.P. **Krystian Winszewski** Camera Operator

Stylist Xenia Brennan **Make up Artist** Carrie Jessup

Angie Vlasaty Peterson Editor-in-Chief

Bruce Bock Editor

Angela Koehler Managing Director

Angie Perino Managing Director

Gregory Zychowicz Art Direction & Design

© 2022 Andis Company

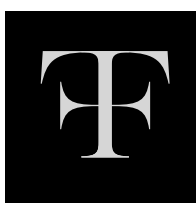


TABLE OF CONTENTS

STYLES

LONDON CROP

PAGE 2



MODERN DAY CLASSIC

PAGE 8



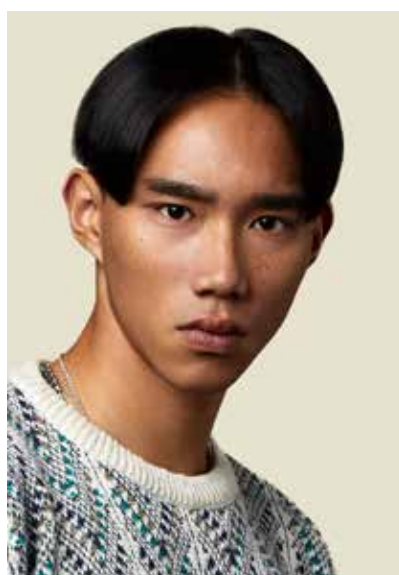
LOW TAPERED AFRO

PAGE 16



90's CURTAIN

PAGE 22



MODERN BOWL MULLET

PAGE 28



THE TOOLS

PAGE 35

MAINTENANCE

PAGE 38

ANDIS EDUCATION

PAGE 40

FEATURED ARTIST

PAGE 42

CREATED
YOUR
WAY



*LONDON
CROP*

The London Crop combines elements of precision cutting and sharp detailing. Created using a soft clipper fade throughout the sides and back, this look finishes with a bold, detailed front fringe that demands attention.

Use an **Andis Master® Cordless clipper**, and with the blade closed, cut clipper-over-comb on the curve of the head to create the initial guide.



Next, use a #2 attachment comb and remove the hair below the previously cut guideline to create the canvas to start the fade.



Switch to a #1.5 attachment comb and open the blade to start descending the fade below the previously cut section.



Continue descending the fade using a #0.5 attachment comb with blade closed, cutting below the previously cut section using a C-stroke motion.



Remove the attachment comb and begin fading to a smooth transition at the nape area. Start with the blade in the open position, gradually working your way to a closed blade.



Repeat this same fading process on the sides.



With the **Andis GTX-EXO™ trimmer**, start to remove the hair around the perimeter.



Cut clipper-over-finger or use shears to connect the top and back areas using diagonal sections, working with a low elevation to maintain the length at the crown.



Then take horizontal sections to connect to the guide on the curve of the head, still working with a low elevation.



Blow dry the hair, using fingers and a brush to help add volume at the roots.



Use the **Andis GTX-EXO™ trimmer** and visually cut the front fringe to the desired length. Finish styling with product to enhance the texture.









MODERN
8 *DAY CLASSIC*

The Modern-Day Classic is a soft, shaggy look, utilizing square graduation to remove weight internally. This look showcases a disconnected fringe for softness and a truly personalized finish.

Use the **Andis reVITE™ clipper** with closed blade and #3 attachment comb. Start to remove the hair from the nape up toward the occipital bone, using a c-stroke motion.



Remove the attachment comb and start blending using the clipper-over-comb technique. Position the comb at a 45-degree angle to build up a graduation along the parietal ridge.



Continue working your way around the head.



At the nape, create your guide, cutting approximately 1.5" up the head with the blade in the closed position.



Then, using the #1 attachment comb and open blade, create your next guideline about .5" above the original guide. Use a c-stroke motion to aid in the transitions as you go up the head.



Switch to a #1.5 attachment comb and with an open blade, create your next guideline about .5" higher than the last section.



Next, use a #2 attachment comb and open blade to create your next guideline about .5" higher than the previously cut section.



Repeat this same process on the sides.



Remove the attachment comb, close the blade, and refine your transitions using the clipper-over-comb technique



Blend the beard with the fade on the sides cutting clipper-over-comb with the blade in the closed position.



With the blade still in the closed position, freehand clipper cut the beard to create the initial shape.



Always take a step back and visually look at the shape before detailing and refining the beard.



Next, use the **Andis GTX-EXO™ trimmer** to detail around the perimeter of the cut.



Use the corner of the blade in tight and angled areas. Cut crisp lines first, then clear away any excess hair beyond it.



At the crown area, comb the hair away from the head and point-cut to blend.



Comb the hair down to its natural fall along the front hairline. Freehand clipper cut or use a razor to cut square.



Using vertical sections on the front fringe, remove the corner of weight to create texture and movement.

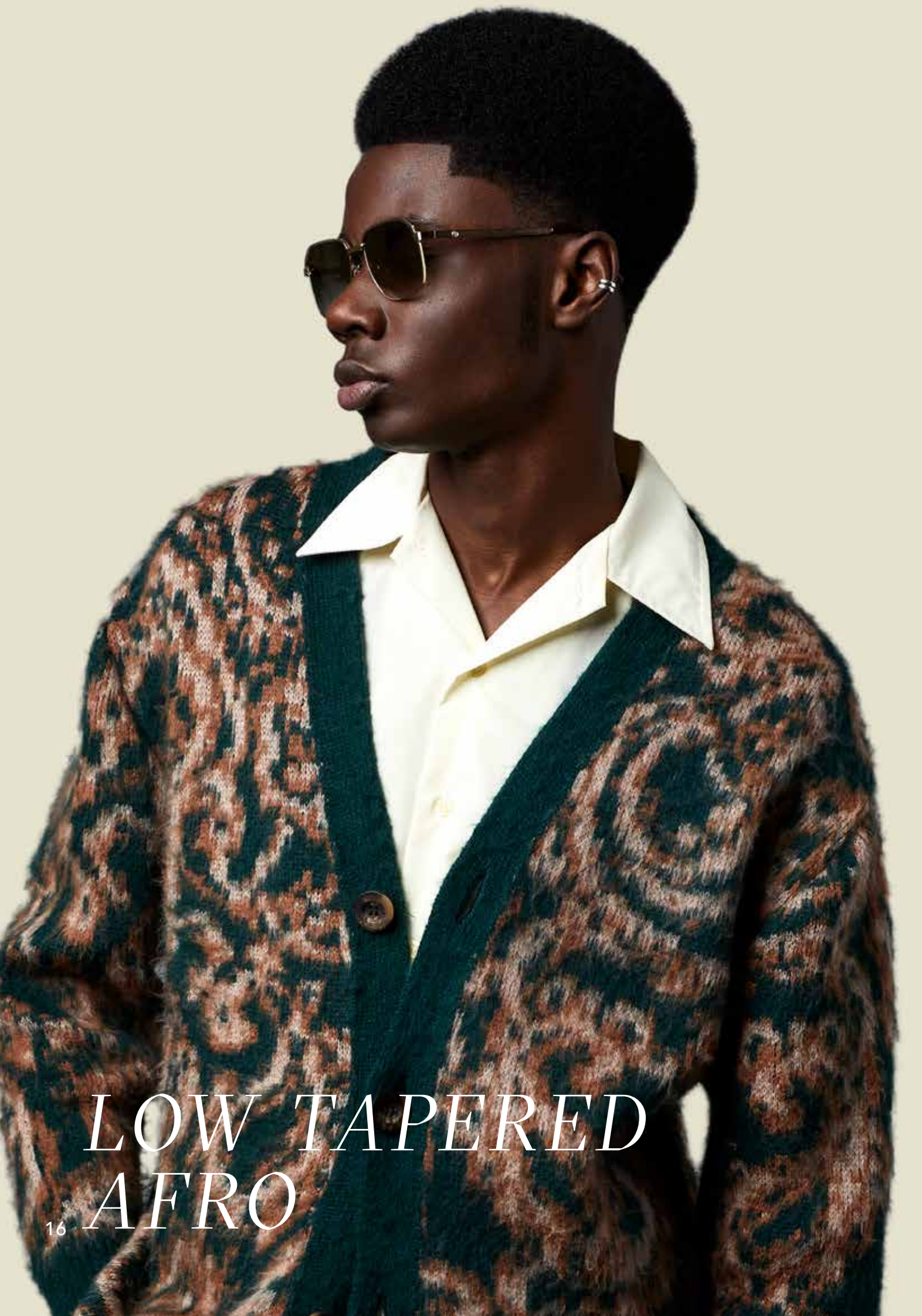


Blow dry with a diffuser and use clips to section the hair to create and maintain movement and texture. Finish the look by finger styling with product.









*LOW TAPERED
AFRO*

The Low Tapered Afro is created by starting with a low skin fade using clippers combined with scissor techniques on top to craft a uniform shape. Attention to detail is key in constructing this bold shape and style.

Using an **Andis Master® Cordless clipper** with blade closed, start to freehand cut the hair to the desired length.



Continue working around the whole head, stepping back often to visually ensure the shape is balanced.



Using an afro comb, pick through to expand the hair length and continue to create and refine your shape.



Begin the fade by creating a guide line at the nape using the **Andis reVITE™ clipper** with the blade in the closed position.



Use a #1 attachment comb and open blade and start fading about 1" up from the guide.



Remove the attachment comb and open the blade to blend the line out, using both a c-stroke motion and corner of the blade for a smooth transition.



Add the #2 attachment comb with blade in the open position and fade up the head .5" above the previously cut section using a c-stroke motion.



Next, remove the attachment comb and refine the fade with the blade closed. Freehand cut as desired or use clipper-over-comb for a smooth transition.



Repeat the same fading process on the sides.



Use the **Andis GTX-EXO™ trimmer** to remove the hair around the perimeter at the nape area.



To remove the hair down to the skin, use an **Andis ProFoil® shaver**.



Refine along the fade using trimmer-over-comb with the **Andis GTX-EXO™ trimmer** to ensure a smooth transition.



Continue detailing around the hairline, using the corner of the trimmer in tight areas.



Shape up the front hairline starting at the middle of the forehead moving side to side. Step back to make sure your line is straight.



Use the **Andis GTX-EXO™ trimmer** or shears to remove any stray hairs, always taking a step back to ensure the shape is balanced throughout the head.







90's
CURTAIN

The 90's Curtain is a classic shape with a trending edge. This look is created by combining a taper fade throughout the sides and back - with an exaggerated disconnected length on top where the length is cut to visually create sharp lines.

Section and clip the top. Then, taking horizontal sections, cut your guide along the curvature of the head.



Use the **Andis reVITE™ clipper** with blade in the closed position to create the guideline at the nape.

Open the blade halfway, then start to remove the line.



Use the #1 attachment comb and continue to fade the nape area.



Cut clipper-over-comb to fade up the head, angling the comb away 45-degrees from the head.



Always take a step back and visually look at your fade; remove any imperfections.



Repeat the same fade process on the sides.

Using the corner of the clipper will help to remove any weight lines.



Use the **Andis GTX-EXO™ trimmer** to detail around the perimeter.



Use an **Andis ProFoil®** shaver to remove the hair down to skin.



Release and wet the hair on top, combing it down through the sides. Use the **Andis reVITE™ clipper** and angle cut the length on top using a comb as a guide.



Blow dry the hair using a vent brush for volume, then a round brush to create shape at both sides.



Use the **Andis GTX-EXO™ trimmer** to refine the shape and create a sharp edge.









MODERN
BOWL MULLET

The Modern Bowl mullet is a creative mid-length haircut, working with texturizing techniques and disconnection. The perimeter is formed with a two-step cutting shape. The fringe, along with the sides and back, is cut blunt to add an overall edge to the finished look.

Section the crown and clip hair away. Starting from the center back, use an **Andis Master® Cordless clipper** and create a square baseline to establish the length.



Continue working up the head section by section, smoothing out the hair before cutting.



After completing the back section, clip the hair away. At the side, use the jawline as a guide to create your length at the front. Cut clipper-over-comb with the **Andis Master® Cordless clipper** and blade in the closed position.



With the **Andis GTX-EXO™ trimmer**, visually cut the fringe, working from the center out to each side.



Inspect your shape from a distance to ensure that it is balanced.



Working from the crown, comb the hair straight out from the head and slice cut for texture and softness.



Make sure you leave enough distance between your fingers and the hair you are cutting to create texture.



Evenly distribute product throughout the hair and finish with a hairdryer to create movement and hold.



Detail and refine the shape to finish the look.









FEATURED TOOLS

*reVITE*TM

CLIPPER



Featuring a Detachable
Fade Blade (00000-000)



Featuring a Detachable
Taper Blade (000-1)

REFRESH, REFINE, reVITETM

Fierce passion meets finely-tuned precision

You're not just "cutting hair." You're sharing art. And the reVITE clipper lets you tag all your hard work. Pull off crisp designs and flawless blending with either the pro-fade clipper in a sleek, black, metal-alloy body, or fine-tuned tapers with the lighter-weight gray clipper. Both clippers feature a powerful motor with slim, comfortable grip that wraps around enough battery-life for a double-shift. To conquer the details, count on this finely-tuned instrument to handle all that you dream. When you're finished slinging undercuts, clean-up is quick with the adjustable and fully detachable blade. Next-level artist, meet next-level blade.

Visit andis.com for more information.

FEATURED TOOLS

MASTER® CORDLESS CLIPPER



GTX-EXO™ TRIMMER



reSURGE™ SHAVER



Breakthroughs come from pushing onward, not from accepting “good enough.” Execute top-quality cuts with the Master® Cordless clipper—the timeless Andis tool that started it all. Inside the iconic, indestructible aluminum body beats an incredibly powerful, high-speed rotary motor perfect for shaping all hair types and styles. Take on every skin-tight fade, taper or faux hawk with ultra-precise carbon-steel blades that adjust from 000 to 1. Enjoy total freedom as you create, untethered. The extra long-lasting lithium-ion battery stays strong for over 90 minutes per charge. Classics are classics for a reason. Create your legacy with the Master Cordless clipper.

Better than ever. Take your styling and creativity to the next level with the GTX-EXO™ trimmer. While keeping everything you love about the pro standard T-Outliner®, precision has taken a huge leap forward. An intuitive shape gives crystal clear visibility as you outline, shave and fade. The better-than-ever GTX-Z blades are retooled to cut closer than before and can be zero-gapped and are finished in Gold—without modification. Cordless means more flow and less restriction, so you can create until the battery says, “hold up.”

From the moment the shop doors open to closing time, the reSURGE™ shaver was made for all-day use. Designed to elevate your game and packs all the punches: glide through the closest, smoothest shaves. With wide range and maximum versatility, it was made for cutting all hair types, wet or dry. Its long-hair trimmer makes prep easy and cuts time shaving, raising the bar for a better experience—for you and your client. Its pivoting head allows for seamless contouring and constant skin contact. And its comfortable ergonomic grip delivers less wrist strain so you can keep powering through to create what’s next.

PROFOIL® PLUS SHAVER



Achieve the smoothest fades with rich, gold titanium foil heads that expertly pare hair down to the skin without irritation. Pushed forward by a powerful rotary motor, the ultra-lightweight case was made for agility and razor-close cuts. Clean up edges and eliminate stubble all afternoon. Extra long-lasting lithium-ion power means non-stop smooth finishing, while the premium, snap-in charge stand keeps your instrument always within reach. Push beyond ordinary with the ProFoil® Lithium Plus Titanium Foil shaver.

PROFOIL® SHAVER



Show the world your fades and blends with the ProFoil® Lithium Titanium Foil shaver. Conquer stubble in style with sleek, attractive design. Dipped in rich, golden titanium, the staggered head runs whisper-quiet and won't irritate client skin. The ultra long-lasting lithium-ion battery doubles the run-time of its competitors, you can focus solely on your next smooth finish. Reveal your best work with the Pro-Foil Lithium Titanium Foil shaver.

ACCESSORIES

CERAMICEDGE & ULTRAEDGE BLADES



ATTACHMENT COMBS

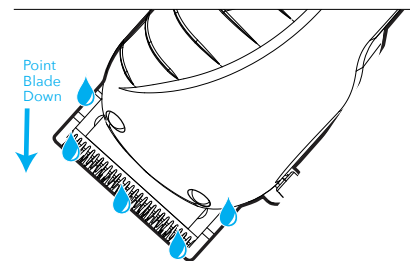


MAINTAINING YOUR TOOLS

Take care of your tools and they will take care of you. Improper maintenance can lead to dull blades, sluggish performance and ultimately a shutdown of the tool itself. Beyond poor performance, there are also potential health risks if tools are not disinfected properly. If you continue to notice a decrease in performance after cleaning and oiling, it may be time to replace your blade.

TOOL MAINTENANCE

1. With the tool off, clean out hair and loose debris with a blade brush.
2. Turn the tool on and use Andis Cool Care Plus® spray to disinfect the blade. Turn off the tool and wipe away any residue.
3. **IMPORTANT: Always point the blade of the clipper or trimmer down during oiling.** Turn the clipper or trimmer on and place 3 drops across the teeth of the blade and 1 drop at each inside rear corner of the blade. Let any excess oil run off onto a towel underneath. Let your tool run for approximately 10 seconds to distribute the oil throughout the blade set, then turn it off and wipe off any remaining oil.



*Note: In between clients or during longer cuts, use Andis Cool Care® to disinfect, cool off the blades and lightly lubricate them.



COOL CARE PLUS®

Andis Cool Care Plus® spray is a True artists bring the heat, but also know when to cool it down. Blade coolant, disinfectant, lubricant, cleaner and rust pre-treatment expertly packaged into a single, convenient aerosol can--this complete, ultra-versatile formula helps cleanse and maintain your tools for advanced hygiene and longevity. Just a few quick sprays between each fresh cut boosts the life of your blades to new heights, while obliterating potential germs. The high-pressure, contoured nozzle even blasts stray hair out of teeth for a spotless finish, without having to detach the blade.



CLIPPER OIL

Ensure your tools are ready for your next creative breakthrough with must-have Andis Clipper Oil. Specially formulated to prolong the life of Andis equipment, this extra-premium mix keeps blades friction-free. The odorless, color-free formula won't discolor or damage metal. Keep your blades in peak condition with Andis Clipper Oil.



BLADE BRUSH

Sweep hair and debris with the Andis Blade Brush, specially designed to thoroughly clean clippers and trimmers. The sleek profile tidies all blade sizes and tucks away for easy storage, while the widened, contoured handle makes it easy to use.

ANDIS EDUCATION

Andis recognizes that creators need a place to come together to learn new skills, get tips and find inspiration that they can bring back to their clients, and our Education Site empowers creators to have access to new content from virtually anywhere.

The Andis Education Team, comprised of some of the most renowned barbers and stylists in the world, works hard to deliver content for all skill levels. Whether you are looking for fundamentals, trending styles, advanced techniques – or even just ways to spark your creativity – the Andis Education site is your source for finding what you need to create your way for success.

Join our world-class education team each month for live, interactive virtual classes. You'll learn new and trending styles as well as tips and tricks from some of the best talent in the industry. These two-hour long virtual classes provide the perfect opportunity to learn from our experts and even ask them specific questions. After the class, you'll have access to the entire on-demand recording.



Angie Perino
Global Education
Manager
[@angieperinohair](#)



Kenny Duncan
North American Artistic
Team Lead
[@kduncangrooming](#)

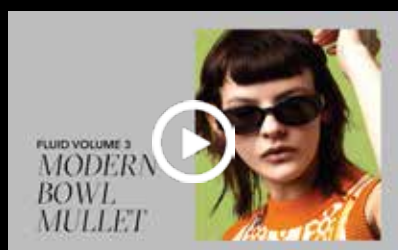
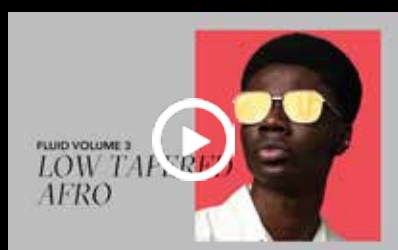
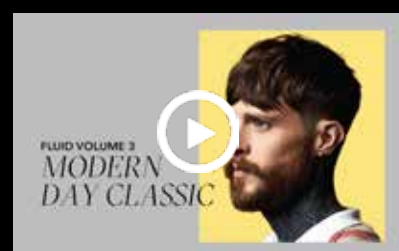


Kevin Luchmun
International Artistic
Team Lead
[@kevinluchmun](#)

Perfect for on-the-go or in-between clients, our virtual education on-demand library contains previously recorded courses, plus plenty of quick videos that are five minutes or less. In addition to step-by-step lessons in haircutting, other great content is available such as downloadable books and guides featuring how to care for your tools.

Discover the Fluid Vol. 3 Collection,
plus fresh, new content every month at:

andis.com/BarberStylistEducation



contact
EDUCATION DEPARTMENT
bbeducation@andisco.com





FEATURED ARTIST

KEVIN LUCHMUN

Andis International Artistic Team Lead

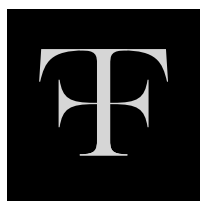
@kevinluchmun

Kevin Luchmun is an award-winning London-based barber, stylist and photographer. He's renowned for his blend of traditional barbering and high-end men's hairdressing. During his formative years he would continuously seek educational opportunities to further hone his craft and rose through the ranks where he held the position of International Art Director for Toni & Guy, heading up their men's education division. Continuous learning helps drive Kevin towards a clear artistic vision and his technical haircutting skills have led him to become a huge inspiration to the industry.

Joining Andis was a dream come true for Kevin. He has had a deep-rooted respect for Andis and was determined to work with the brand. Kevin says "Very early in my career I got the opportunity to work on the

Andis stage at Salon International. From that moment I was passionate about Andis and I was always intent on working with the brand. For me there was never an alternative to Andis; I've waited a long time for this to come to fruition. Now that I've reached this point in my career and have so many achievements and accolades, the timing and the type of position couldn't be more perfect. I look forward to working with the extremely talented Global Education Team, to elevate Andis' educational resource base and brand appeal while highlighting the precision and performance of its industry-leading tools."

Kevin's most recent accolades include: Black Beauty Hair Awards Barber Of The Year winner, Behindthechair #ONESHOT Men's Hairdresser winner, Creative HEAD Most Wanted Male Grooming Specialist finalist, AIPP Awards Men's Stylist finalist and British Hairdressing Awards Men's Hairdresser Of The Year finalist.



ISBN: 978-1-951889-02-9 \$25.00



9 781951 889029