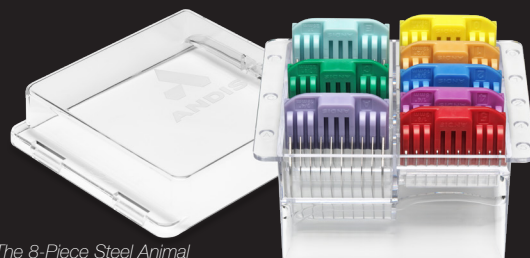


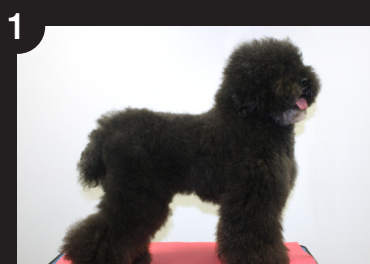
CUT TIME FROM YOUR ROUTINE BY USING ATTACHMENT COMBS.

with Andis Global Education Manager Nicole Kallish

Think you need more than one clipper or multiple blade sizes to create a fresh groom like this German trim with Asian flair? Think again. It can be fast and easy to create great grooms with a single clipper, such as the Pulse ZR® II detachable blade clipper, and quality attachment combs like the Andis® 8-Piece Steel Animal Combs set. These heavy-duty attachment combs snap on and off quickly and the best part is that they work with either the Andis UltraEdge® or CeramicEdge® size 10 or 30 blades. You'll save time without compromising on quality.



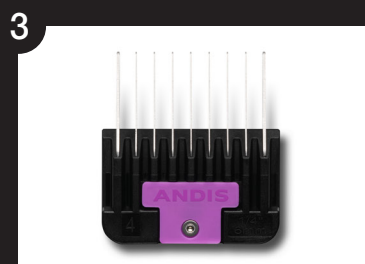
The 8-Piece Steel Animal Combs set from Andis features durable stainless-steel tines and color coding for easy identification.



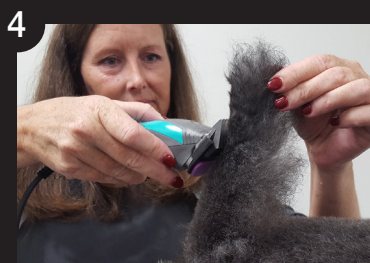
1 Begin with a clean, dry, freshly brushed dog – like this Miniature Poodle. Determine what length you want to achieve and select the appropriate attachment comb.



2 Begin by cutting the topline and body, using the #2 blue attachment comb on a #10 blade.



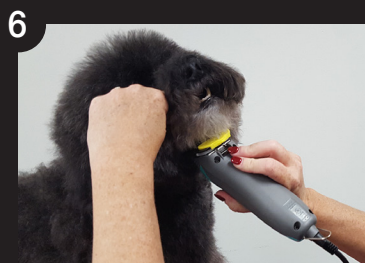
3 Then, proceed clipping with the #4 purple attachment comb to achieve a cut length of 1/4".



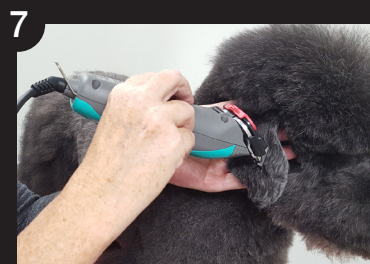
4 Trim the back of the tail, sides of the neck and front of the chest.



5 Next, use the #0 yellow attachment comb on the muzzle.



6 Move to the chin and continue clipping, working to blend the throat area into the chest.



7 To set the length on the ears, use the #5 red attachment comb.



8 For improved control, use your non-clipping hand to provide stability to the ear while clipping.



9 Once all clipped areas are set, scissor them to blend and create a smooth finish. The leg, topknot and front of tail sections can all be hand scissored to complete the finished look.