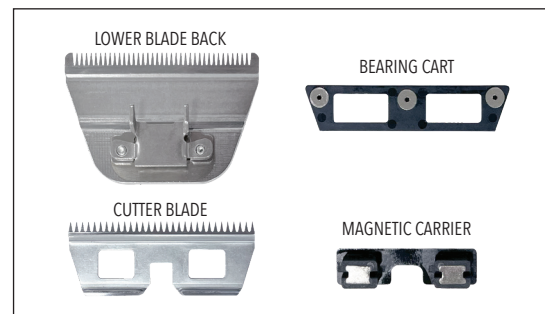


# M-FORCE<sup>®</sup>

## WIDE BLADE ASSEMBLY INSTRUCTIONS



**1** Remove Cutter Assembly for cleaning by pushing magnetic assembly with finger & slide to separate from lower blade.



**2** Separate all assembly parts.



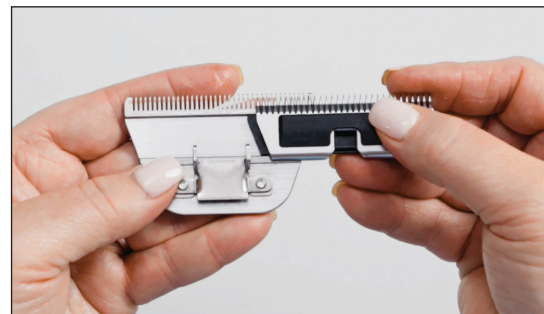
**3** Once separated, brush or blow away any hair before reassembly. All existing cleaners, air canisters, etc. can be used with M-Force<sup>®</sup> blades.



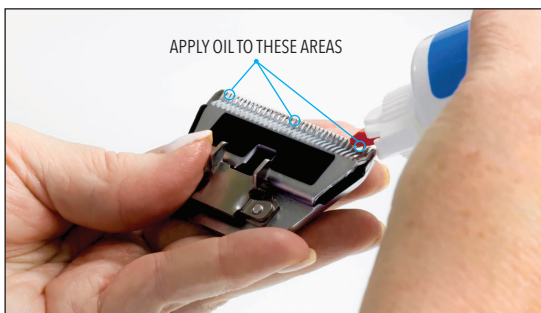
**4** Attach Magnet Carrier to top of Cutter, not in cutter channel.



**5** Place Bearing Cart back on assembly. Bearing Cart sides should match the same angle as the cutter angle and magnets should be by teeth of the cutter. You see 5 magnets - 3 circles & 2 rectangles as shown.



**6** Slide assembly back into channel of the Lower Blade.



**7** Apply oil by placing 3 drops along teeth of blade. Wipe off any excess oil.



**8** Reinstall on any Detachable Blade Clipper and begin use.

**VIEW VIDEO  
OF ASSEMBLY  
INSTRUCTIONS**

