



**ANDIS**

*PROGRESSIVE  
FADING*

ADVANCED SERIES

## PROGRESSIVE FADING

Hair professionals specializing in men's grooming must be proficient in cutting styles which incorporate fading. From a technical perspective, fading can be one of the more challenging techniques to master. Whether it's a high, medium or low fade, it takes time, practice and patience to master this skill. These three different fading techniques can be immediately implemented behind the chair.

---

## CONSULTATION

During the consultation you will need to make quick decisions, so trust your instincts, have opinions and show your enthusiasm!

Male customers often look for direction from their stylist or barber. Always offer small and subtle changes every time to keep your customer interested. The changes don't always have to be within the haircut; it can be with facial hair or products, too.

Consider the following:

1. Ask open-ended questions
  2. Listen intently
  3. Hair characteristics & length
  4. Head profile
  5. Hair growth pattern
  6. Body proportions
  7. Style & personality
- 

## DIRECTIONAL TECHNIQUE

**Cutting with the grain:** Using your clipper with the hair growth pattern. This is a technique often used with wavy and tightly curled hair.

**Cutting across the grain:** Cutting perpendicular to the hair growth pattern. This is performed in the transitional areas.

**Cutting whorl areas:** Clipping the hair in every direction to achieve an even cut.

---

## OTHER CLIPPING TECHNIQUES

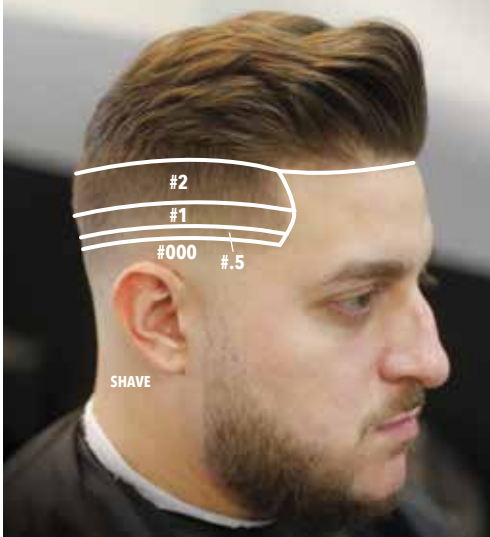
1. Shear-style cutting
2. Point-cutting
3. Sculpting

More info on other clipping techniques can be found in our Clipper 101 book available at [master-barberschool.com](http://master-barberschool.com).

**BEGINNER**

*FADING TECHNIQUE #1*

Cutting a low fade with attachment combs



**CORDLESS**

*MASTER® CLIPPER*

The classic performance you expect from the Master now with cordless freedom and convenience

Lithium-ion battery delivers over 90 minutes of nonstop run time; charges in just 60 minutes

Extremely powerful with blade speeds over 7,200 SPM

Lightweight for greater comfort



#12470



#04140

**5-Piece Small Comb Set**

- #0 - 1/16" 1.5 mm
- #1 - 1/8" 3 mm
- #2 - 1/4" 6 mm
- #3 - 3/8" 10 mm
- #4 - 1/2" 13 mm

**INTERMEDIATE**

*FADING TECHNIQUE #2*

Cutting a mid fade with detachable blades



**CORDLESS**

*SUPRA® ZR II*

Removable battery for fast, easy replacement

Heavy duty, detachable blade clipper with a cordless design delivers a 3-hour run time on a 2-hour charge

Lithium-ion power mated with powerful rotary motor to cut any hair type - wet or dry

5 speeds: Adjustable from 1,800 to 3,800 strokes per minute



#79005



Equipped with 000 blade

#64480



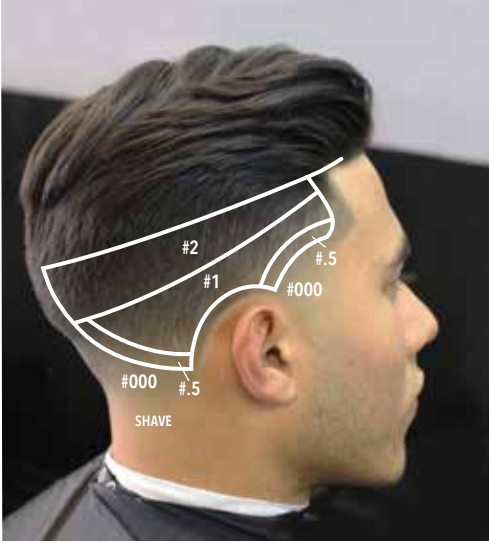
Optional 00000 blade for fading

#64730

**ADVANCED**

*CLIPPER-OVER-COMB TECHNIQUE*

Cutting a low fade with clipper-over-comb



When using the clipper-over-comb technique, the heel of the clipper blade should be connecting with the teeth of the comb, making a distinct sound as you cut. When using a larger clipper comb, use the whole blade front (toe) of the clipper to cut the hair, and when using smaller cutting and barbering combs, use the bottom half or third of the clipper blade to cut the hair. This way, you do not accidentally cut any hair outside of the comb.

**Dos & Don'ts**

- Do use a rocking out motion or 'c-stroke' to avoid creating lines.
- Do open your blade to soften and remove lines in between.
- Do be aware of customer's head/skin imperfections prior to cutting.
- Don't assume your customer knows the difference between a high, mid, or low fade - show them.
- Don't fade too high - avoid doing this by fading from high to low attachment combs and blade sizes.

**CORDLESS**

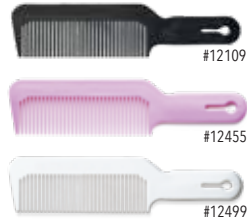
*ENVY® CLIPPER*

Lithium-ion battery delivers over 2 hours of nonstop run time; charges in as little as 90 minutes

Rotary motor power with cord/cordless convenience

Side adjustment lever perfect for cutting tapers and fades

Lightweight for greater comfort - weighs less than 10 oz.



Use different color combs for different hair colors