



*Professional  
precision & power  
... for maximum cuteness.*

DETACHABLE BLADE CLIPPER

*Quick, powerful and fierce  
- just like you.*



## BESPOKE™ CLIPPER

ALL COAT TYPES

DUAL-SPEED MOTOR

Powerful, smooth cutting

LONG-LASTING

LITHIUM-ION BATTERY

Up to 80 minutes run time

SOFT-TOUCH GRIP

Comfortable, creative control



#560087

Our innovative **induction charging mat** provides convenient charging and is compatible with other induction charging Qi-compatible devices, like your cell phone. Experience next-level cordless performance with the beSPOKE Clipper.



—  
**ALSO CHARGES  
PHONES!**

# PULSE ZR<sup>®</sup> II WILD

CLIPPER

ALL COAT TYPES

FIVE-SPEED MOTOR

Powerful, smooth cutting

LONG-LASTING REPLACEABLE  
LITHIUM-ION BATTERY

Up to 3 hours run time

#10 ceramicEDGE<sup>®</sup> BLADE

Comfortable, creative control

DETACHABLE BLADE SYSTEM

Easily switch blades to meet all your  
grooming needs

#561458



*Gabriel Feitosa*

LIMITED EDITION

Unleash your  
WLD side!



"Dreams do come true! Inspired by my world of fantasy pups, Andis and I are excited to bring you this gorgeous, new Pulse ZR® II colorway. This is my all-time favorite clipper with a personal twist. I hope you enjoy this beast as much as I do!"

### Gabriel Feitosa

Award-Winning Professional Groomer,  
Andis Global Educator & Social Media Influencer



DETACHABLE BLADE CLIPPER



# EMERGE™

CLIPPER

---

**ALL COAT TYPES**

---

**DETACHABLE  
ceramicEDGE BLADE**

Runs cooler, stays sharper; size 10

---

**LONG-LASTING  
LITHIUM-ION BATTERY**

Up to 1.5 hours run time

---

**CONTOURED BODY  
WITH FINGER GROOVES**

Fits comfortably in your hand while providing an ergonomic grip and finger placement.



#560489



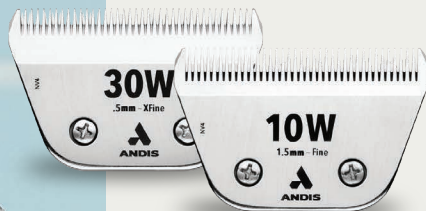
#560486



Create fabulous grooms faster with the new eMERGE™ professional clipper. This tool was built for groomers who want high speed and power, cord/cordless flexibility and a comfortable shape to increase control and reduce hand strain. From curly to long fur, plush trims and tidy profiles, this single-speed clipper will cut through any coat. The eMERGE is designed to let your creativity flow and get you through the busiest days.

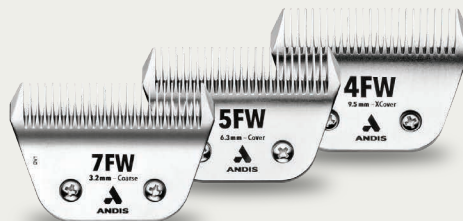
*Get through  
the busiest days.*

# WIDE BLADES



**30W XFINE**  
1/50" (0.5 mm)  
561462

**10W FINE**  
1/16" (1.5 mm)  
561460



Coming Summer 2024

**7FW COARSE**  
1/8" (3.2 mm)  
561465

**5FW COVER**  
1/4" (6.3 mm)  
561464

**4FW XCOVER**  
3/8" (9.5 mm)  
561463

## Groom Faster & More Efficiently

Introducing Andis ceramicEDGE Wide Blades! Our one-of-a-kind precision tooth pattern is driven by our new, 31-tooth ceramic cutter which has 16% more teeth than the leading competitors. This will ultimately feed the hair better and leave your clients with a smooth, clean finish. Andis wide blades are 36% wider than a standard blade allowing you to groom pets, livestock or equine quicker, faster and easier. These blades are compatible with all professional Andis detachable blade clippers.



# 8-PC WIDE BLADE ATTACHMENT COMB SET

Pair any Wide Blade with an attachment comb for ultimate cut length versatility. Achieve clean finishes with ultra-durable, stainless-steel combs that move through the coat more smoothly than plastic attachment combs.

#561475

*Ultimate Duo!*



# ULTRAEDGE®

## BLADES

For a dependable, long-life blade, look no further than Andis ultraEdge blades. Made from high-carbon steel to keep them sharper longer, with a chrome finish that inhibits corrosion, you have cutting solutions that will last for years.



**50SS**  
1/125" (0.2mm)  
**64185**



**40SS**  
1/100" (0.25 mm)  
**64084**



**40**  
1/100" (0.25 mm)  
**64076**



**30**  
1/50" (0.5 mm)  
**64075**



**15**  
3/64" (1.2 mm)  
**64072**



**10**  
1/16" (1.5 mm)  
**64071**



**7 SKIP TOOTH**  
1/8" (3.2 mm)  
**72610**



**7FC**  
1/8" (3.2 mm)  
**72600**



**5 SKIP TOOTH**  
1/4" (6.3 mm)  
**72640**



**5FC**  
1/4" (6.3 mm)  
**72630**



**4 SKIP TOOTH**  
3/8" (9.5 mm)  
**72625**



**4FC**  
3/8" (9.5 mm)  
**72615**



**3-3/4 SKIP TOOTH**  
1/2" (13 mm)  
**64133**



**3-3/4 FC**  
1/2" (13 mm)  
**64135**



**5/8HT**  
**64930**  
5/8" (16 mm)



**3/4HT**  
**63980**  
3/4" (19 mm)



**T-10**  
**22305**  
1/16" (1.5 mm)



**T-84**  
**21641**  
3/32" (2/4 mm)

# CERAMICEDGE®

## BLADES

For clippers that get a workout all day long, consider Andis ceramicEdge blades. Our advanced formula ceramic cutter stays up to 75% cooler than steel and provides increased durability and a long-lasting edge.



**40SS**  
1/100" (0.25 mm)|  
**64350**



**40**  
1/100" (0.25 mm)  
**64265**



**30**  
1/50" (0.5 mm)  
**64260**



**10**  
1/16" (1.5 mm)  
**64315**



**7FC**  
1/8" (3.2 mm)  
**72605**



**5FC**  
1/4" (6.3 mm)  
**72635**



**4FC**  
3/8" (9.5 mm)  
**72620**



**30FT**  
Includes 22T  
Fine-tooth Cutter  
1/50" (0.5 mm)  
**560188**



**10FT**  
Includes 22T  
Fine-tooth Cutter  
1/16" (1.5 mm)  
**560192**



**7FT**  
Includes 24T  
Fine-tooth Cutter  
1/8" (3.2 mm)  
**560208**



**5FT**  
Includes 24T  
Fine-tooth Cutter  
1/4" (6.3 mm)  
**560205**



**4FT**  
Includes 24T  
Fine-tooth Cutter  
3/8" (9.5 mm)  
**560194**

Coming Summer 2024



**30W XFINE**  
1/50" (0.5 mm)  
**561462**



**10W FINE**  
1/16" (1.5 mm)  
**561460**



**7FW COARSE**  
1/8" (3.2 mm)  
**561465**



**5FW COVER**  
1/4" (6.3 mm)  
**561464**



**4FW XCOVER**  
3/8" (9.5 mm)  
**561463**

# GROOMING TOOLS



**PIN BRUSH**  
65720 - LARGE  
68560 - MEDIUM



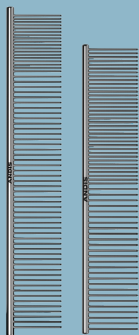
**FIRM SLICKER BRUSH**  
68540 - LARGE  
68565 - MEDIUM



**SOFT SLICKER BRUSH**  
65835



**SELF-CLEANING  
SLICKER BRUSH**  
68570



**STEEL COMB**  
68545 - 10"  
68550 - 7-1/2"



**NAIL CLIPPER**  
68575 - LARGE  
65830 - SMALL

*Perfect grooming  
take the right  
tools!*



---

**DEMATTING RAKE**  
68780



---

**FLEXIBLE RAKE COMB**  
65735



---

**FINE-TOOTH  
DESHEDDING RAKE**  
65780



---

**STRAIGHT BLADE  
DESHEDDING TOOL**  
65765



---

**DESHEDDING TOOL**  
65760 - LARGE  
68765 - COMPACT



---

**FLEA COMB**  
68770



---

**DEMATTING TOOL**  
68775

# ALL-IN-ONE CARE. CLEAN. COOL. SANITIZE. LUBRICATE. PREVENT.



12590



12570



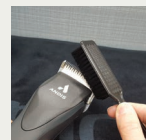
12570



12108



12415



## STEP 1

### CLEAN

Remove large hair fragments from the blade with a blade brush.



## STEP 2

### DISINFECT

Use Cool Care Plus 5-in-one formula on your blades after every use and during extended clipping to cool, disinfect, lubricate, clean and prevent rust. Hold the clipper or trimmer with the blade facing towards the floor. Turn the tool on and spray the blade from 6" away. Spray both the front and back of the blade. Turn off tool and wipe off excess spray with a clean cloth.



### STEP 3

## DE-GUNK YOUR CLIPPER

Wash away hair, buildup and preservatives that accumulate on blades using this Vitamin E enriched formula. Works as a coolant, deodorizer, lubricant, cleaner and rust preventative. Turn off clipper or trimmer and pour approximately 1/8"-1/4" of Blade Care Plus into the lid or shallow pan. Dip blade only into solution for 10 seconds. Remove and wipe off excess with a clean cloth.



### STEP 4

## LUBRICATE

Use Andis Clipper Oil to lubricate and clean blades. Blades should be oiled between every cut to maximize the performance of your tool. With the tool running, place 3 drops of oil across the teeth of the blade and 1 drop on each back rail. Turn off the clipper or trimmer and blot excess with a clean, dry cloth.



## BLADE DRIVE REPLACEMENT

If your blades don't seem to cut like they used to, or your clipper appears to drag, it's a sign you may need to replace your blade drive. Turn off clipper and snap off the detachable blade. Slide off blade drive cap. Remove screws with a Phillips screwdriver and lift out drive assembly. Insert new blade drive and reverse steps to complete.



Step-by-step videos at  
[andis.com](https://www.andis.com)

# CUSTOMER SUPPORT

PHONE

1-800-558-9441

ANDIS COMPANY

1800 Renaissance Blvd.

Sturtevant, WI 53177

USA

Scan to contact us:



[andis.com](http://andis.com)

