

EVILATS
YOUR GAME

Professional precision & power.



GALAXY CLIPPER & TRIMMER

GO BEYOND THE LIMITS.

Let your imagination
run wild with the
new, limited-edition

GALAXY





ENVY[®] Li

CLIPPER

ADJUSTABLE BLADE (000-1)
for creative control

LITHIUM-ION BATTERY
for up to two hours of consistent power

ERGONOMIC AND LIGHTWEIGHT
for all-day comfort

#560968

SLIMLINE[®] PRO

TRIMMER

PRECISION T-BLADE
for crisp designs and touch-ups

LITHIUM-ION BATTERY
for up to two hours of consistent power

ERGONOMIC AND LIGHTWEIGHT
for all-day comfort

#560974

DETACHABLE BLADE SYSTEM
for maximum flexibility

LITHIUM-ION BATTERY
for up to 1.5 hours of consistent power

ERGONOMIC AND WELL-BALANCED
provides minimal vibration

eMERGE™

CLIPPER



The eMERGE clipper was designed with barbers like you in mind. Customization is in the palm of your hand with our detachable blade system. The pains of heavy-duty bulk removal are now a thing of the past with our powerful rotary motor and durable, cool-running ceramic blade. With eMERGE, there is no limit to what you can achieve.



#561340

reVITE™

CLIPPERS

ELEVATED DESIGN
textured grip, easy-to-hold slim shape

LITHIUM-ION BATTERY
for up to 2 hours of consistent power

12 PREMIUM METAL-CLIP
ATTACHMENT COMBS



#86100

GRAY reVITE comes with
Removable Adjustable
Blade (000-1)



#86000

BLACK reVITE comes with
Removable Adjustable
Fade Blade (00000-000)

MASTER®
CORDLESS



#12660

MASTER®



#01815

FADE MASTER®

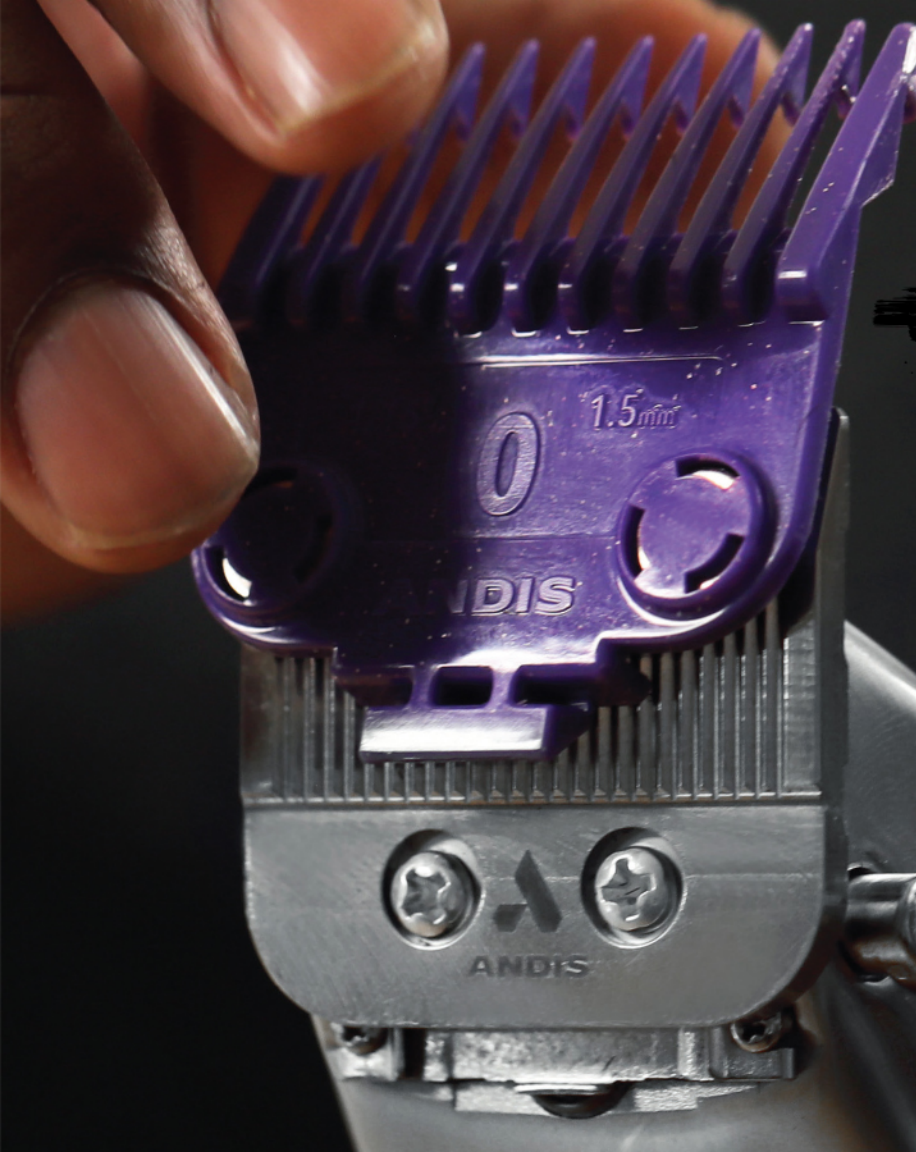


#01820

MASTER YOUR CRAFT.



Powerful, high speed, legendary—the Master® Cordless & Corded Clippers belong in the hands of those willing to break the mold. Whether you choose our OG corded Master with its iconic magnetic motor or our modern Master Cordless with rotary motor power, both feature extra-sharp carbon-steel blades that adjust for lengths 000 to 1 to deliver professional precision on every single cut. Breeze through the busiest afternoons in the shop with cool, quiet operation and a special rapid-feed blade design. Made for years of heavy use, the polished, indestructible aluminum casing looks as sleek as it cuts and handles all your great ideas. Master your craft with the Master®.



LET'S
BACK!

MASTER®
SIZE ZERO
ATTACHMENT COMB

The OG zero is the perfect companion to the Master taper or fade blade for bulk removal, blending and fading.

For Master Clipper
models ML & MLC

Delivers a cut length of
1/16" (1.5mm)

#561385

phät

MASTER REPLACEMENT BLADE

LEAVES HAIR

1/8 - 1/4" (3.2 - 6.3mm)

Includes 28-tooth cutter for smoother
blending and fading

Carbon-steel for a dependable,
long-life blade that stays sharp



#561870 MASTER (corded)

#561949 MASTER CORDLESS

reSURGE™

SHAV ER

EASY PIVOT HEAD
adjusts to hug the contour
of the face or head

WET/DRY SHAVE
for smooth gliding,
easy cleaning

LONG HAIR TRIMMER
saves time on pre-shave
trims

Level up with this sleek,
innovative shaver that
packs all the punches.
Delivers 60 minutes of
run time.

#17300



18
20
22
24
26
28
30

GTX-EXO[®]

TRIMMER

Elevate your technique,
executing tighter details
and design.

GTX-Z CARBON-STEEL BLADES
cutting edge precision

BOLD VISIBILITY
enhanced sight lines

CORD/CORDLESS DESIGN
freedom to create

#74150



SLIMLINE[®] PRO GTX[™]

TRIMMER

Details are the difference
between good and exceptional
art. Show the world what
you're made of.

PRECISION BLADE
crisp designs & touch-ups

LIGHTWEIGHT HOUSING
contoured for comfort

UP TO 2-HOUR RUN TIME
LITHIUM-ION BATTERY
long lasting, consistent
power

#32270



#561879

GTX-S

BLADE

NEW!

Our sharpest blade to date!

Fits GTX-EXO



PRO T-BLADE
precise trims and designs

7,200 SPM MOTOR
powerful, rotary power

PREMIUM STAND
easy, convenient charging

T-OUTLINER[®]

TRIMMER

Celebrate your commitment to the craft. The Lithium-Ion powered constant speed motor with T-Blade outlines and designs through the thickest of hair.

#74055

18
20
21
22
23
24
25
26

ultraEDGE

BLADES

For a dependable, long-life blade, look no further than Andis UltraEdge blades. Made from high-carbon steel to keep them sharper longer, with a chrome finish that inhibits corrosion, you have cutting solutions that will last for years.



FLAT TOP
3/32" (2.4mm)
21641



OUTLINER®
1/150" (0.1mm)
64160



00000
1/125" (0.2mm)
64740



0000
1/100" (0.3mm)
64074



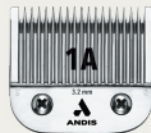
000
1/50" (0.5mm)
64073



0A
3/64" (1.2mm)
64210



1
3/32" (2.4mm)
64070



1A
1/8" (3.2mm)
64205



1-1/2
5/32" (4mm)
560199



2
1/4" (6.3mm)
64078



2-3/4
5/16" (7.9mm)
63165



3-1/2
3/8" (9.5mm)
64089



3-3/4 FC
1/2" (13mm)
64135



5/8 HT
5/8" (16mm)
64930



3/4 HT
3/4" (19mm)
63980

ceramicEDGE

BLADES

For clippers that get a workout all day long, consider Andis CeramicEdge blades. Our advanced formula ceramic cutter stays up to 75% cooler than steel and provides increased durability and a long-lasting edge.

DETACHABLE BLADES



00000
1/125" (0.2mm)
64730



000
1/50" (0.5mm)
64480



0A
3/64" (1.2mm)
64470



1
3/32" (2.4mm)
64465



1A
1/8" (3.2mm)
63055



1-1/2
5/32" (4mm)
63015



2
1/4" (6.3mm)
63030



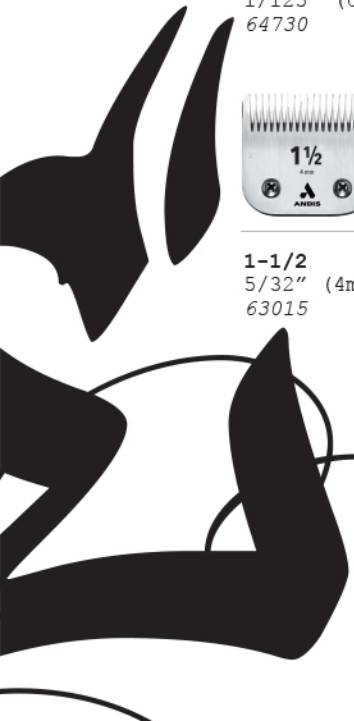
3-1/2
3/8" (9.5mm)
63040



MEDIUM CUTTER
64445
25 cutting teeth.
Fits blade sizes
00000, 0000, 000



COARSE CUTTER
64440
18 cutting teeth.
Fits blade sizes
0A, 1, 1A, 1-1/2, 2,
3-1/2, 3-3/4, 3-3/4
FC, 5/8"HT, 3/4"HT



CLIPPER

REPLACEMENTS BLADES



US-1/LCL/AAC-1
Carbon-steel,
Adjustable Fade Blade
Size (00000-000)
69130



US-1/LCL/AAC-1
Stainless-steel,
Adjustable Fade Blade
Size (00000-000)
69180



US-1/LCL
Carbon-steel,
Adjustable Blade
Size (000-1)
66250



ML
Carbon-steel, 22-tooth
Adjustable Blade
Size (000-1)
01556



ML
Carbon-steel, 28-tooth
Adjustable Blade
Size (000-1)
01513



ML
Carbon-steel, 28-tooth
Adjustable Fade Blade
Size (00000-000)
01591



ML
Ceramic, 22-tooth
Adjustable Blade
Size (000-1)
01810



ML
Carbon-steel,
Adjustable Phat Blade
Size (1A-2)
561870



MLC
Ceramic
Replacement Blade
Size (000-1)
05050



MLC
Carbon-steel, 22-tooth
Adjustable Blade
Size (000-1)
74040



MLC
Carbon-steel, 22-tooth
Adjustable Fade Blade
Size (00000-000)
74045



MLC
Chrome-plated, 22-tooth
Adjustable Blade
Size (000-1)
74070



MLC
Chrome-plated, 22-tooth
Adjustable Fade Blade
Size (00000-000)
74075



MLC
Carbon-steel,
Adjustable Phat Blade
Size (1A-2)
561949



US-1, LCL
Carbon-steel,
Adjustable Blade
Size (000-1)
66240



MTC
Gray Taper Blade
Assembly
Adjustable Blade
Size (000-1)
86010



MTC
Black Fade Blade
Assembly
Adjustable Blade
Size (00000-000)
86015



SL II, SL3
Stainless-steel
T-blade
32859



D-8
Carbon-steel
T-blade
32105



D-8
Stainless-steel
T-blade
32225



D-8
Stainless-steel
Wide Blade
32735



GTO, GTX, GO
Carbon-steel
T-blade
04521



GTO, GTX, GO
Carbon-steel
Square Blade
04604



GTO, GTX, GO
Carbon-steel
Deep-tooth T-blade
04850



GTO, GTX, GO
Stainless-steel
T-blade
04565



GTO, GTX, GO
Stainless-steel
Deep-tooth T-Blade
04945



GTO, GTX, GO
Ceramic T-blade
04720



PFS-1
Replacement Foil & Cutter
17330



ORL
Carbon-steel
T-blade & Bracket
04535



ORL
Carbon-steel
Square Blade &
Bracket
04545



ORL
Carbon-steel
Deep-tooth T-blade &
Bracket
04555



ORL
Stainless-steel
T-blade & Bracket
04570



ORL
Stainless-steel
Deep-tooth T-blade &
Bracket
04575



TS-1, TS-2
Titanium Foil Assembly
& Inner Cutter
17280



TS-1, TS-2
Titanium Foil Assembly
17160



ORL
Ceramic T-Blade
04590



ORL-S
GIX-EXO Deep-tooth
Gold GTX Z-blade
74110



ORL-S
GIX-EXO Shallow-
tooth Gold GTX
Z-blade
74115



PMT-1
Stainless-steel
T-Blade
23570



ORL
Replacement Bracket
20657

TRIMMER & SHAVER REPLACEMENTS

ALL-IN-ONE CARE. CLEAN. COOL. SANITIZE. LUBRICATE. PREVENT.



STEP 1 CLEAN

Remove large hair fragments from the blade with a blade brush.



STEP 2 DISINFECT

Use Cool Care Plus 5-in-one formula on your blades after every use and during extended clipping to cool, disinfect, lubricate, clean and prevent rust. This spray kills Covid-19 virus (and other bad stuff!). Hold the clipper or trimmer with the blade facing towards the floor. Turn the tool on and spray the blade from 6" away. Spray both the front and back of the blade. Turn off tool and wipe off excess spray with a clean cloth.

STEP 3

DE-GUNK YOUR CLIPPER



Wash away hair, buildup and preservatives that accumulate on blades using this Vitamin E enriched formula. Works as a coolant, deodorizer, lubricant, cleaner and rust preventative. Turn off clipper or trimmer and pour approximately 1/8"-1/4" of Blade Care Plus into the lid or shallow pan. Dip blade only into solution for 10 seconds. Remove and wipe off excess with a clean cloth.

STEP 4

LUBRICATE



Use Andis Clipper Oil to lubricate and clean blades. Blades should be oiled between every cut to maximize the performance of your tool. With the tool running, place 3 drops of oil across the teeth of the blade and 1 drop on each back rail. Turn off the clipper or trimmer and blot excess with a clean, dry cloth.



DETACHABLE CLIPPER BLADE DRIVE REPLACEMENT

If the blades on your detachable clipper don't seem to cut like they used to, or your clipper appears to drag, it's a sign you may need to replace your blade drive. Turn off clipper and snap off the detachable blade. Slide off blade drive cap. Remove screws with a Phillips screwdriver and lift out drive assembly. Insert new blade drive and reverse steps to complete.



Step-by-step videos at andis.com.

COMING SOON.

MASTER[®]
CORDLESS CLIPPER

GTX-EXO[™]
TRIMMER

with **M-FORCE**

An advanced magnetic tension
system by Andis.



COMING SOON.

CORDLESS
ENVY II
CLIPPER



CORDLESS
FRS-C
BRUSHLESS
CLIPPER



CORDLESS
FRS-T
BRUSHLESS
TRIMMER

CUSTOMER SUPPORT

PHONE
1-800-558-9441

ANDIS COMPANY
1800 Renaissance Blvd.
Sturtevant WI 53177
USA

Scan to contact us:



andis.com

M-FORCE

TIME FOR A REVOLUTION

An advanced magnetic
tension system by Andis.



ANDIS